

StorONE + Phison: Bringing AI to the Edge of Data

StorONE and Phison have joined forces to deliver an AI-native, turnkey platform that simplifies and accelerates on-premises inference and enables large language model (LLM) training of an organization's proprietary stored data.

This combined system, known as ONEai, allows enterprises, universities, and government institutions to securely and affordably harness the power of generative AI to gain insights in their on-premises stored data.

This StorONE + Phison solution pioneers a new category: AI-Integrated Storage.



EFFICIENT
PROTECTION



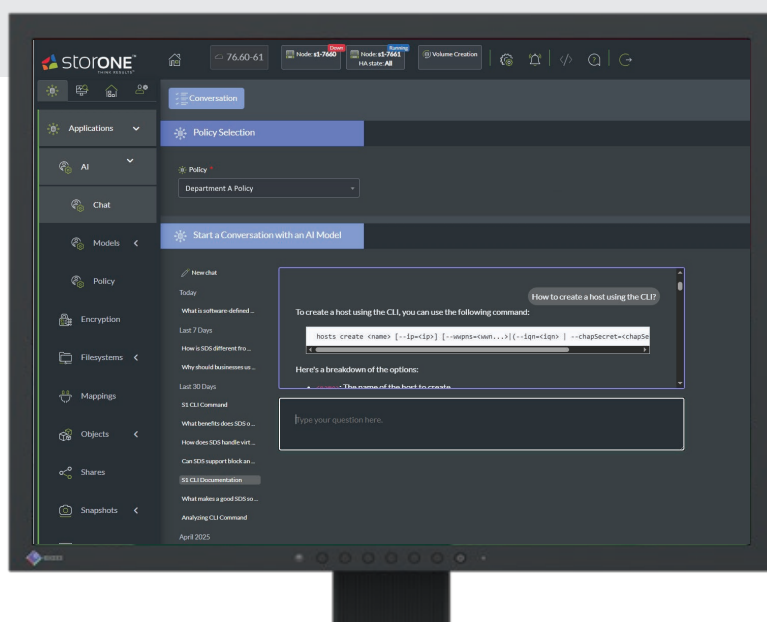
EFFICIENT
INFRASTRUCTURE



EFFICIENT
OPERATIONS



EFFICIENT
ECONOMICS



Hi ONEai BOT – How many legal cases did we win for medical malpractice last year in California?

In 2024 we won six legal cases in California resulting in financial judgments of \$8,163,000.



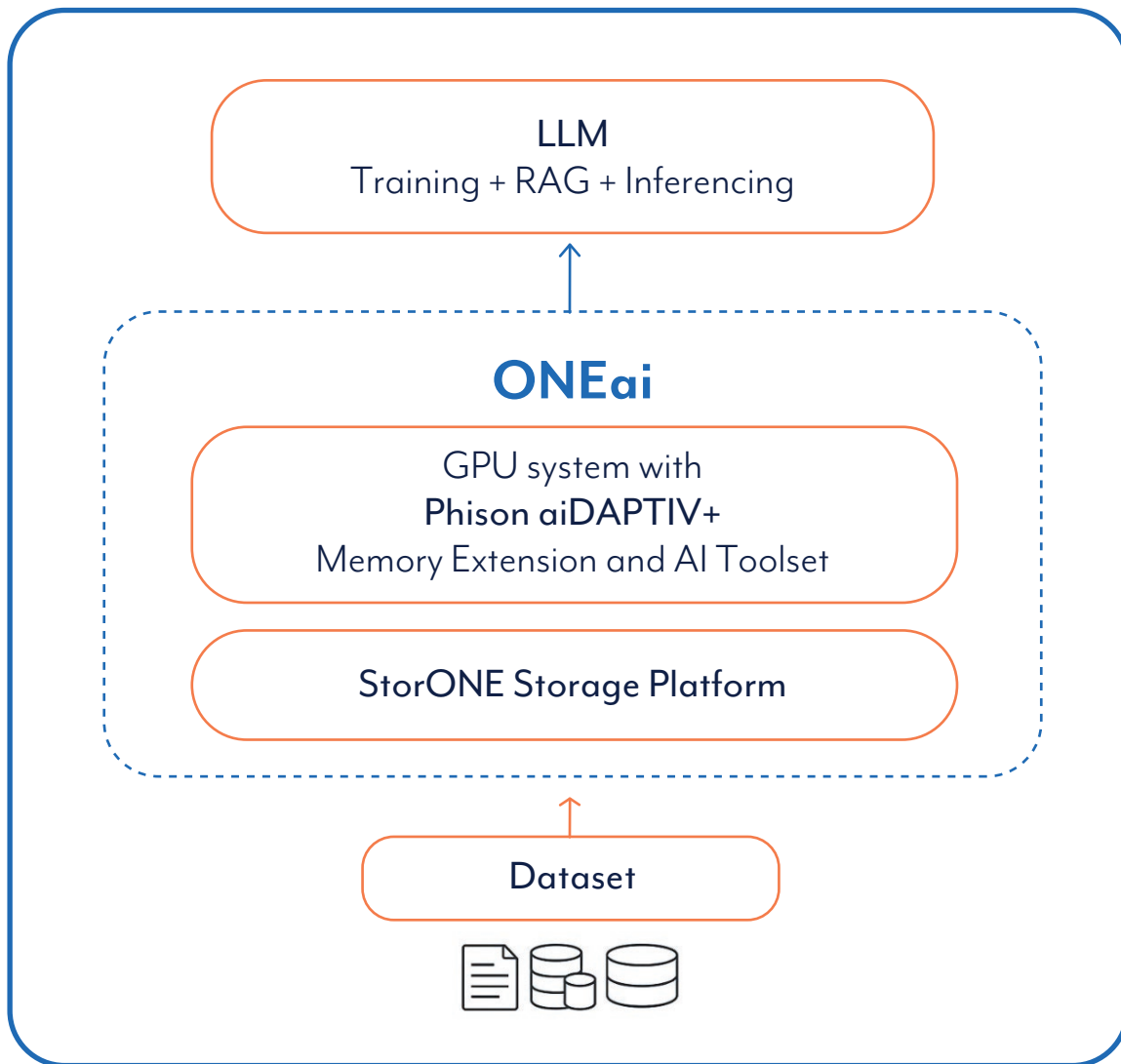
Why ONEai?

This is not “AI-ready” storage – this is true AI-embedded infrastructure.

Thanks to an API co-developed with Phison, our solution unifies storage and AI capabilities into one efficient system. Unlike other offerings in the industry which require external orchestration layers, ONEai offers a tightly integrated and fully automated AI experience, removing overhead while boosting AI capacity and performance.

ONEai – AI-Integrated Storage

On-Premises



Key Benefits

- ☑ **Privacy and Data Sovereignty by Design:**
All AI processing stays on-premises
- ☑ **Zero Complexity:**
Plug-and play set-up--no AI expertise needed
- ☑ **Cost Efficiency:**
Maximize AI memory capacity
with fewer GPU resources
- ☑ **AI-Native Storage:**
Inferencing happens where your trained
data lives

What You Can Do with ONEai

- **Enterprise Search:**
Let teams query internal files and datasets using
natural language
- **Compliance Monitoring:**
Scan and summarize documents and
communications to ensure policy adherence
- **Customer Support Automation:**
Deliver AI-generated responses using historical
tickers and internal knowledge bases
- **Operational Intelligence:**
Discover trends in logs, documents, and
structured data in real-time

ONEai - Bringing AI to the Edge of Data

1.

Full privacy and regulatory compliance (HIPPA, GDPR)

2.

Predictable, reduced costs

3.

Easy plug-and-play AI deployment across existing

4.

Fast insights without data movement

Breakthrough Technology

- **Built-in AI:**
StorONE's ONEai is a turnkey, full-automated AI solution that provides ChatGPT-like interaction with the organization's data.
- **Ready-to-Run:**
ONEai provides insights on proprietary and confidential information which is naturally stored in the StorONE enterprise storage system.
- **On-Premise Use:**
ONEai integrates the aiDAPTIV+ AI capabilities into the StorONE enterprise storage system, enabling on-premises inferencing and large language model (LLM) training.
- **Self-Regulating:**
ONEai automatically detects file changes and updates the AI engine without manual intervention.
- **Cost-Efficient:**
By leveraging Phison's aiDAPTIV+ GPU memory extension technology and StorONE's auto-tiering, ONEai reduces the power, operational and hardware costs for AI processing.



ONEai is optimized for hybrid workflows, such as Retrieval-Augmented Generation (RAG), LLM fine-tuning and high-performance inferencing – ensuring rapid, relevant results from existing datasets.

Capabilities

- Integrated AI engine—no external infrastructure.
- Automatic file change detection.
- Supports GB to PB scale.
- Up to 95% hardware utilization.
- Multi-GB/sec inference throughput.

StorONE:
Store More.
Stay Fast and Secure.
Spend Less.

Whether you are managing millions of files, imaging datasets, PACS, financial records, or AI training data — StorONE delivers high performance, data protection, and scalable economics on one unified, efficient platform.

Contact Us: info@StorONE.com
Learn More: www.StorONE.com